

# PROCESS MANUFACTURING

INDUSTRY PERSPECTIVE

putting you in full control for success



For process manufacturers, there has never been a more crucial time to get accurate, decision-enabling data than now. In today's environment, every bit of control counts – in the management of your raw materials, the monitoring of equipment operation, the productivity of your personnel, and the unitization of your end product. To excel, you have to find ways to maintain current profitability levels, even when the price of raw materials fluctuates or compliance regulations are updated.

That's why so many process manufacturers turn to Activplant. Our solutions are designed to help you achieve real-time operational visibility, optimize your assets and facilitate continuous improvement.

Depend on Activplant software to help you

- maximize yield from raw materials and reduce waste
- pinpoint production incidents
- perform root cause analysis
- measure equipment performance
- identify true production constraints
- optimize personnel resources
- conduct track and trace for compliance
- analyze change-over data
- produce detailed reporting to satisfy regulatory requirements
- receive real-time notifications for changes in production levels via paging or plant-wide visual displays

*“With the Activplant solution, engineers no longer have to wait to see if there is a production problem; they can get up to the minute results and make corrections immediately, resulting in less downtime and higher productivity.”*

Plant Manager  
Food Processing Company

## **ActivEssentials: A Solid Platform for Process Manufacturing**

You need the right information to get to the right people – in real time – to succeed in today's competitive marketplace. ActivEssentials from Activplant is built on Microsoft's proven technology, and includes five key components:

**ActivEssentials Platform** – A central system for single- or multi-server environments that includes data collection, Activplant's Universal Factory Data Model (UFDM) database, processing/communications, administrator interfaces for configuration and management, analytical views/tools, plus report management and storage.

**Root Cause Assignment (RCA)** – Incident response is greatly improved with this module that helps operators quickly analyze problems and take corrective actions. RCA includes a configurator for administrators, Root Cause View for day-to-day operational visibility, and a touch screen for reason code entry from the plant floor.

**Real-Time Logic Engine (RTLE)** – Designed to help you lower implementation and maintenance costs and achieve faster time to results, the OPC-compliant RTLE gathers data from multiple sources, aggregates it, and then processes it to provide meaningful, actionable information.

**Insight for Excel** – Harnesses the power and familiarity of Microsoft Excel to customize data, facilitate deeper analysis

and increase the value of reports. Insight provides standard spreadsheet views, historical reports, and tables with ad hoc data that refreshes automatically as new information becomes available.

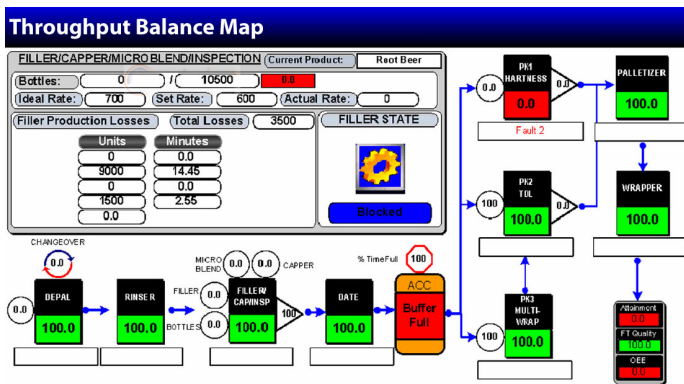
**Integration Toolkit (ITK)** – Links the ActivEssentials database to external systems and applications, such as MES, ERP, reporting packages, dashboards and more. Integration is simple, thanks to included data drivers and adapters for common systems and languages, and ITK includes a development tool for easy query and data set design.

**Throughput Analyzer:  
Providing Essential Data for Process Efficiency**

Throughput Analyzer is a pre-packaged ActivApplication that provides Key Performance Drivers and can produce superior results by providing increased visibility at every level of your organization.

Based on best practices and built for quick-deployment, it allows you to focus in on the most useful, decision-enabling data. Constraints are identified in order of magnitude, so time and energy spent on corrections yields significant improvements. Standard and proprietary calculations produce performance metrics (Throughput Capability Metric and OEE) and attainment and operations measurements (cycle times, downtime, speed losses, and more).

*Throughput Matters: Your operating costs are constant, whether your plant is running at top efficiency – or not. Therefore, every minute of lost production due to a true constraint creates a negative impact on profitability. And every minute of production gained is a true contribution to your bottom line.*



**You Can Depend on Activplant**

Activplant designs, develops and delivers innovative products that make the promise of business intelligence a reality. Our mission is to provide the software solutions that process manufacturers need to collect data, analyze it, and enable a more efficient enterprise.

The Throughput Analyzer Balance Map shows performance in real time, so you can see production constraints at a glance.

**ABOUT ACTIVPLANT**

Activplant Corporation, the leading provider of Business Intelligence for manufacturing operations, is focused on providing innovative software solutions to high-volume, high-automation manufacturers. Since the company's founding in 1998, Activplant's award-winning Business Intelligence platform and applications have helped many world-class manufacturers gain insight into their operations through the consolidation of plant floor data into relevant real-time and historical intelligence. Using this intelligence, Activplant customers better understand and manage their operational performance by focusing on the key issues in their facilities which ultimately affect cost, quality, and supply chain demand requirements.



The Talbot Centre  
140 Fullarton Street, 9th Floor  
London, ON N6A 5P2

Toll Free: 1.877.809.6444  
Telephone: 519.668.7336  
Fax: 519.668.3227

www.activplant.com